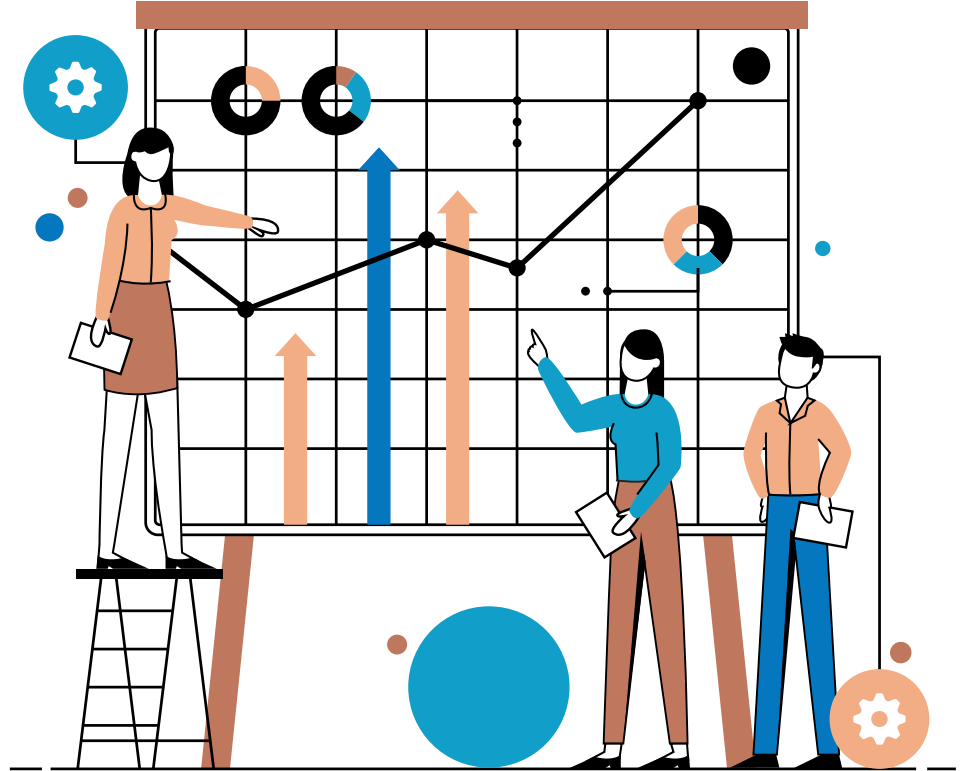


KCIA Student Services

Engagement, Demographics
and Services-**May 2024**



Engagement Measures

Enrollment Transition to the 24-25 School Year

Student Retention Statistics

92% 

Returning Students PK-8th

The majority of current student body has completed the re-enrollment process and will return to KCIA for the 24-25 SY.

8% 

Current students not returning

A small percentage of current parents have informed us their child will not return to KCIA next year. Most are due to moving outside of district boundaries.

24-25 SY Total Enrollment to Date

Pre-K

28

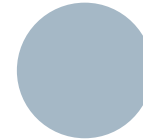
Elementary

325

Middle School

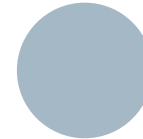
293

Remaining Open Seats



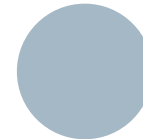
Pre-K

20 Open Seats
Waitlist Count = 0



Elementary

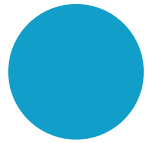
32 Open Seats
Waitlist Count = 0



Middle School

9 Open Seats
Waitlist Count = 6

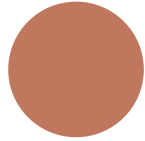
Budgeted Enrollment Information



48

**Pre-K Cooperative
Seats**

Allotted seats for the preK cooperative are determined by the state of Missouri and based on FRL demographics



75

K-8 Grade Levels

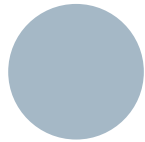
There are 75 seats available at each grade level, K-8



675

Max K-8 Enrollment

If every available K-8 seat were filled, enrollment would be 675 students.



658

EdOps Year End

Budgeting is based on 658 Pre-K through 8th grade students still enrolled as of the end of the school year.

Enrollment Statistics- Pre-K Cooperative Report



[Missouri House Bill](#)
[Governor Parsons Signs Bill to expand Early Childhood in MO](#)



This expansion increases Pre-K Cooperative seats from 24 to 48.



Della Lamb will remain our Pre-K Cooperative partner for the 24-25 SY.



PreK recruitment continues as DL works to hire additional teachers. Classroom space is readily available.

Demographics

Countries of Birth

KCIA students come from 31 countries. Currently 38% of our students are immigrants or refugees. Refugee students may belong to a nationality that is not the same as his/her birth country. Refugee families are often forced to flee their countries of nationality to the safety of a nearby refugee camp or evacuation point. Many of our students are born in refugee camps before arriving in the United States. For example, a student may have been born in Slovakia but his/her nationality is Somali.

Afghanistan	Burundi	Cameroon	Chad
Columbia	Cuba	Djibouti	Nicaragua
Egypt	Eritrea	Ethiopia	Guatemala
Honduras	Iraq	Kenya	Malawi
Myanmar	Mexico	Sudan	Slovakia
Somalia	El Salvador	Syria	Thailand
Turkey	Tanzania	Uganda	Vietnam

Home Languages

KCIA families speak 19 languages. Both written and spoken home-school communication is routinely translated and provided as options for parents in addition to English communication.

Arabic	MaiMai	Burmese	English
French	Karen	Kinyarwanda	Marshallese
Dari	Pashto	Farsi	Somali
Spanish	Swahili	Kiswahili	Vietnamese
Mashaguli	Amharic	Oromo	

Student Demographics

